



Made in the U.S.A



Discovery 2

Aerial Mapping Platform

DISCOVER MORE ►



Discovery 2

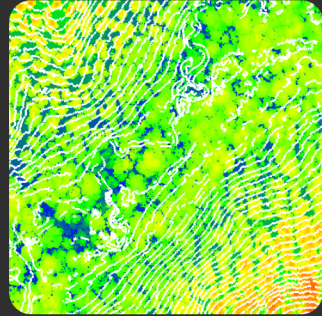
Bring your business into the future of land surveying and mapping with Discovery 2, our entry-level LiDAR drone platform. Advance your drone services with simultaneous LiDAR and Ortho data collection, survey-grade data quality, included data processor, and 24/7 access to our online training portal.

Why Discovery 2?



Subscription-Free Processing

Enjoy subscription-free processing with the Pulse Processor. Receive a perpetual license with your purchase of Discovery 2.



Workflow Integration

Discovery 2's data can be seamlessly imported into the CAD or processing software of your choice.



Support & Training

Our team of specialists are ready to take your business to the next level with included training and optional support.



Real people. Real training & support.



Hands-On Training

Our Field Application Specialists guide you through in-field drone operation and mapping techniques, ensuring you can capture valuable data effectively for various projects.

Data Processing Training

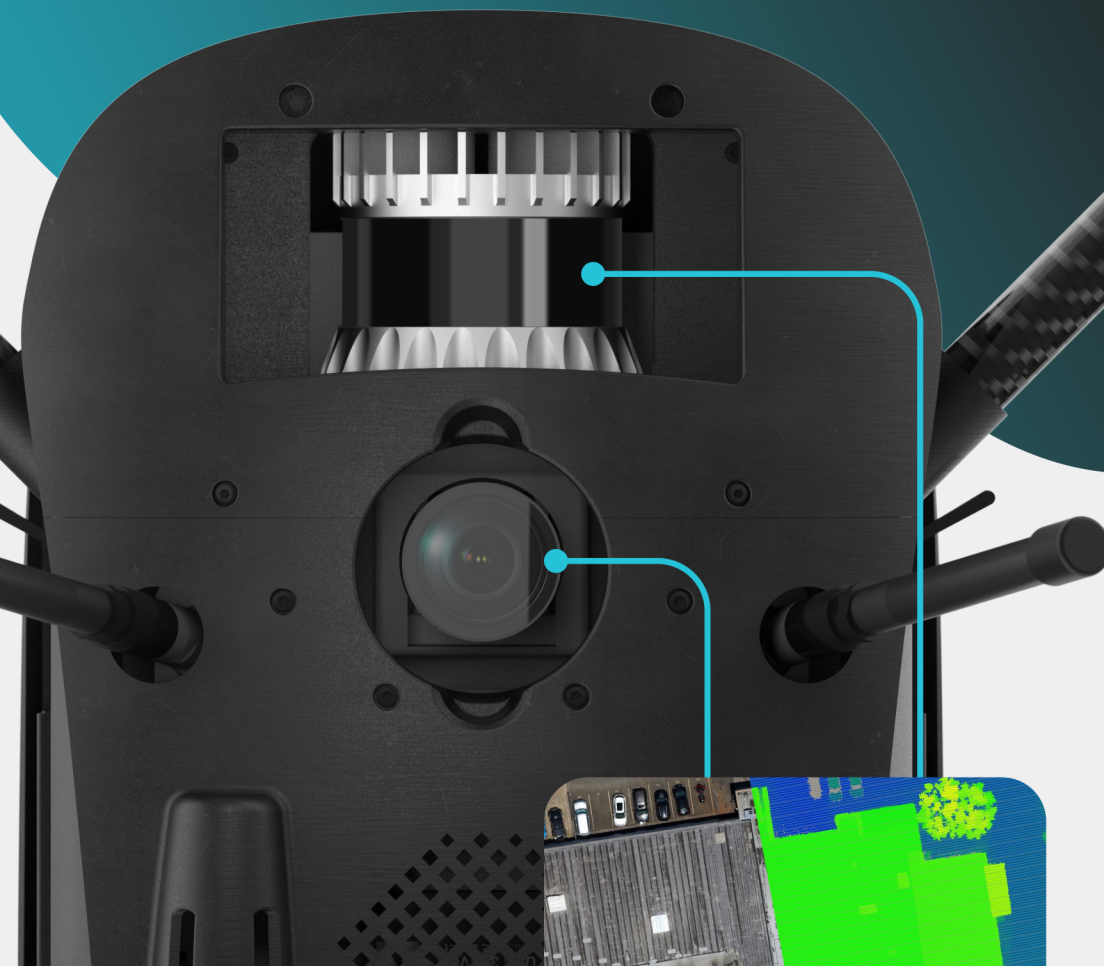
Our team guides you in converting data into valuable, project-specific insights, streamlining your workflow and enhancing the quality of your deliverables.



Courses & Training Included:

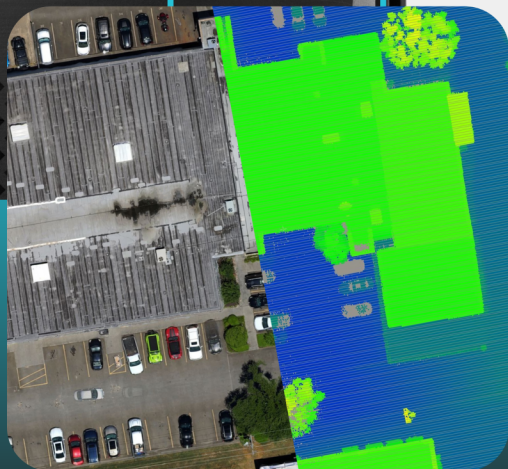


- **Pt. 107 Certification Guide**
 - *Our fast and easy methods to get you and your team Pt. 107 certified.*
- **Mastering Drone Basics**
 - *All things battery charging, drone maintenance, and delivery expectations.*
- **Introduction to Mission Planning**
 - *Planning your flights to ensure success before heading to the job site.*
- **Job Site Setup & Data Collection**
 - *Being safe on the job site during deployment and piloting.*
- **Pulse Processor Basics Course**
 - *Setting the processing of the LiDAR and orthomosaics to be on your control.*
- **CloudCompare & LiDAR Post-Processing**
 - *Extracting more detail for your job specifics.*
- **QGIS Basics**
 - *Checking and refining your orthomosaics.*



One drone, two payloads.

In a single flight collect LiDAR
and photogrammetric data.



PRICE

\$44,999



IN THE BOX

- **Discovery 2 Drone**
- **Rugged Rolling Case**
- **Herelink Controller**
- **Battery Charger**
- **8x Batteries(4 sets)**



Subscription-Free Processing



Workflow Integration



Training & Support



"The U.S.A Drone Company"®



DISCOVER MORE



Start your drone journey
with Discovery 2.

Call us today: (888) 262-3360

Need on-demand
mapping services?



Professional
Services

smartdrone.us/services